



www.heliforklift.net

HELI

CBD20/25/30 A2FLiH

H Series 2-3t Pallet Truck
With Foldable Platform



ANHUI HELI CO., LTD.

Add / No.668, FangXing Road, Hefei, China

Fax / +86-551-63639966

Tel / +86-551-63639068(America); 63639258(Europe);

63639358(Asia); 63662105(Africa & Middle East)



LinkedIn



YouTube



Facebook

Design&Print: Fohell Printing 20230308

* Our products are subject to improvements and changes without notice.



COMFORT AND ENERGY SAVING



STABLE AND RELIABLE



INTELLIGENT SECURITY



CONVENIENT MAINTENANCE



Performance

Compact wheelbase ensures minimal turning radius, delivering exceptional maneuverability in confined workspaces; superior gradeability empowers expansive operational coverage across challenging terrains.



Appearance

Engineered with contemporary industrial design, the streamlined contours seamlessly integrate ergonomic controls, elevating operator comfort to new heights of intuitive precision.



Reliability

The sturdy and durable vehicle structure has successfully passed rigorous testing, including the fork bending fatigue test, fork lifting fatigue test, and full vehicle operation test. Additionally, the vehicle meets stringent environmental compliance standards, ensuring eco-friendly performance.

CBD20/25/30
A2FLiH ———

H Series 2-3t
Pallet Truck With Foldable Platform

FULLY VERIFIED TECHNICALLY RELIABLE

The whole vehicle structure is firm and durable,
and the whole vehicle meets the requirements of environmental protection

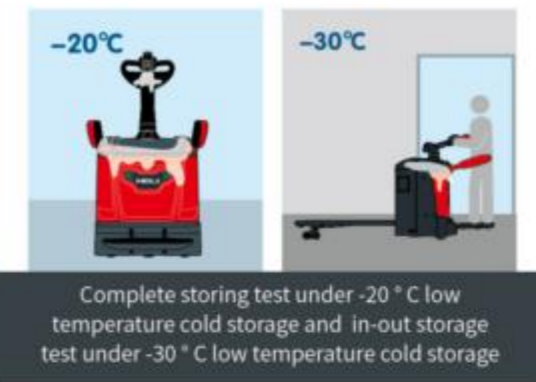
Fatigue test



Rain test of the whole machine

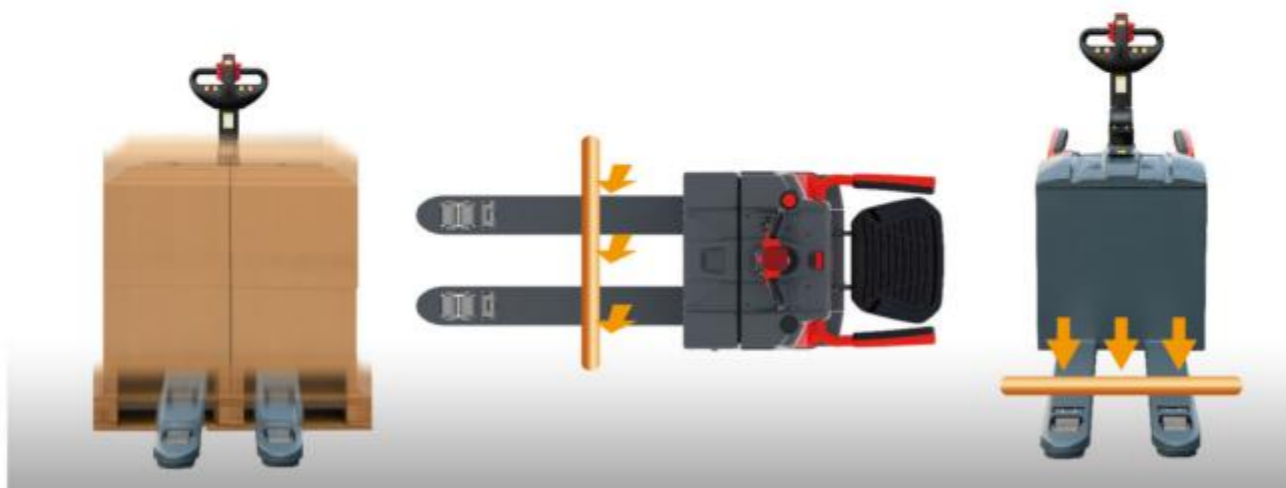


Running test of the whole vehicle



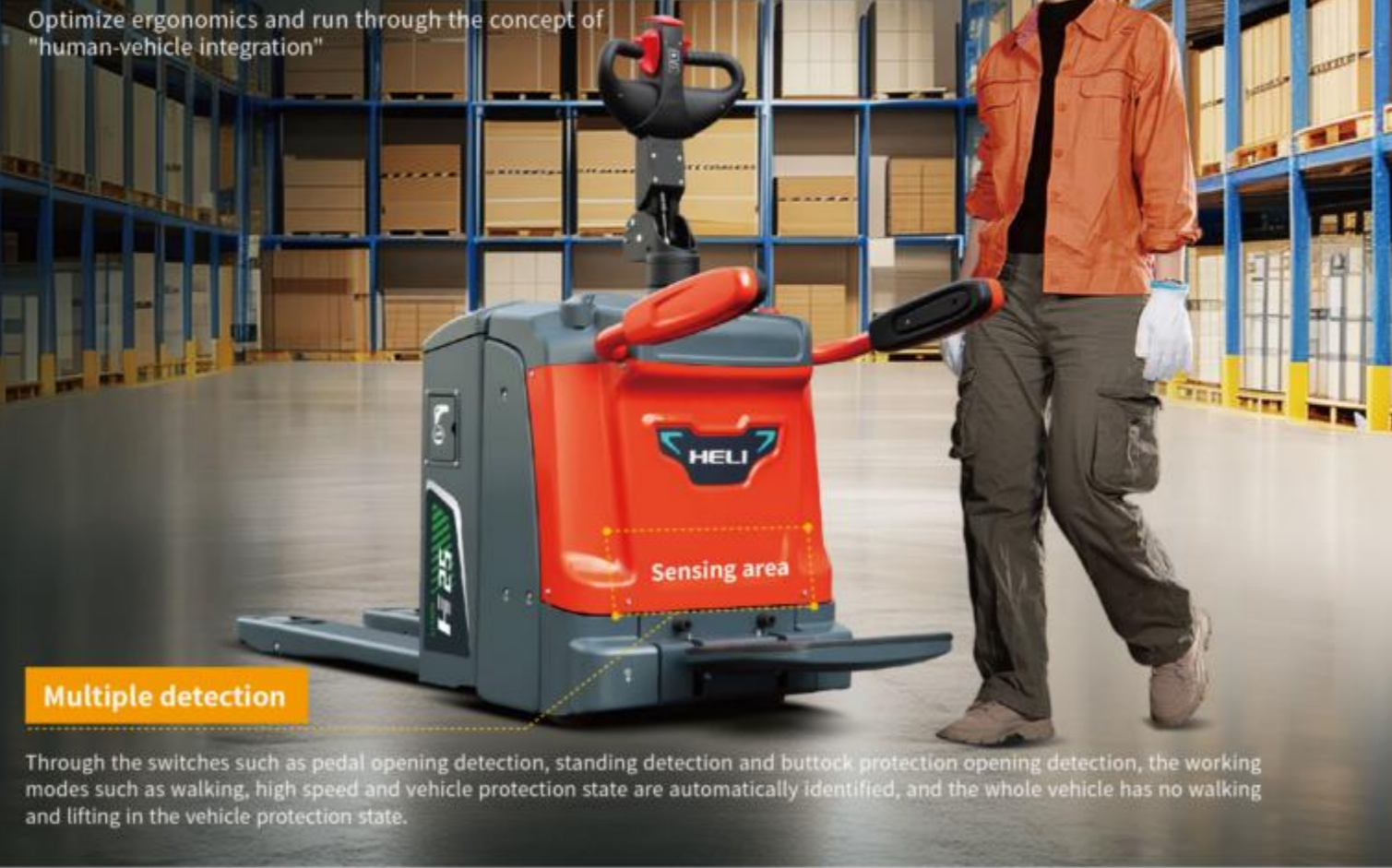
Component bench test

Complete the fatigue endurance test of fork lifting mechanism and frame



SUPERIOR MAN-MACHINE COMFORTABLE RIDE

Optimize ergonomics and run through the concept of
"human-vehicle integration"



Multiple detection

Through the switches such as pedal opening detection, standing detection and buttock protection opening detection, the working modes such as walking, high speed and vehicle protection state are automatically identified, and the whole vehicle has no walking and lifting in the vehicle protection state.



Multiple operating modes
There are walking (tortoise), slow speed (S) and high speed (E) working modes, which can be switched quickly with one key.

Foldable platform
Effectively reduce driving fatigue



Driver perception
When the driver leaves the pedal, the vehicle automatically enters the protection state, and the vehicle can immediately enter the high-speed operation mode when the drivers stands on the pedal, which is safe, convenient and fast to operate.



Foldable armguard
The folding guard plate is thick, the structural strength is high, and the driver is more comfortable to rely on.

ABUNDANT POWER OUTSTANDING STRENGTH

24V voltage system, lithium AC platform, superior performance



✓ Drive system

ZF gearbox features fast driving speed, reliable quality and high driving efficiency;

The driving system is provided with a driving wheel load supercharging mechanism, and the driving wheel load is automatically adjusted according to different loads;



Equipped with high-power steering motor, with strong power and good steering follow-up



12.5km/h
No-load running speed (2.5t)

9.5km/h
Full load running speed (2.5t)

55mm/s
No-load lifting speed (2.5t)

50mm/s
Full load Lifting speed(2.5t)



No-load climbing gradient

2.5t **25%**

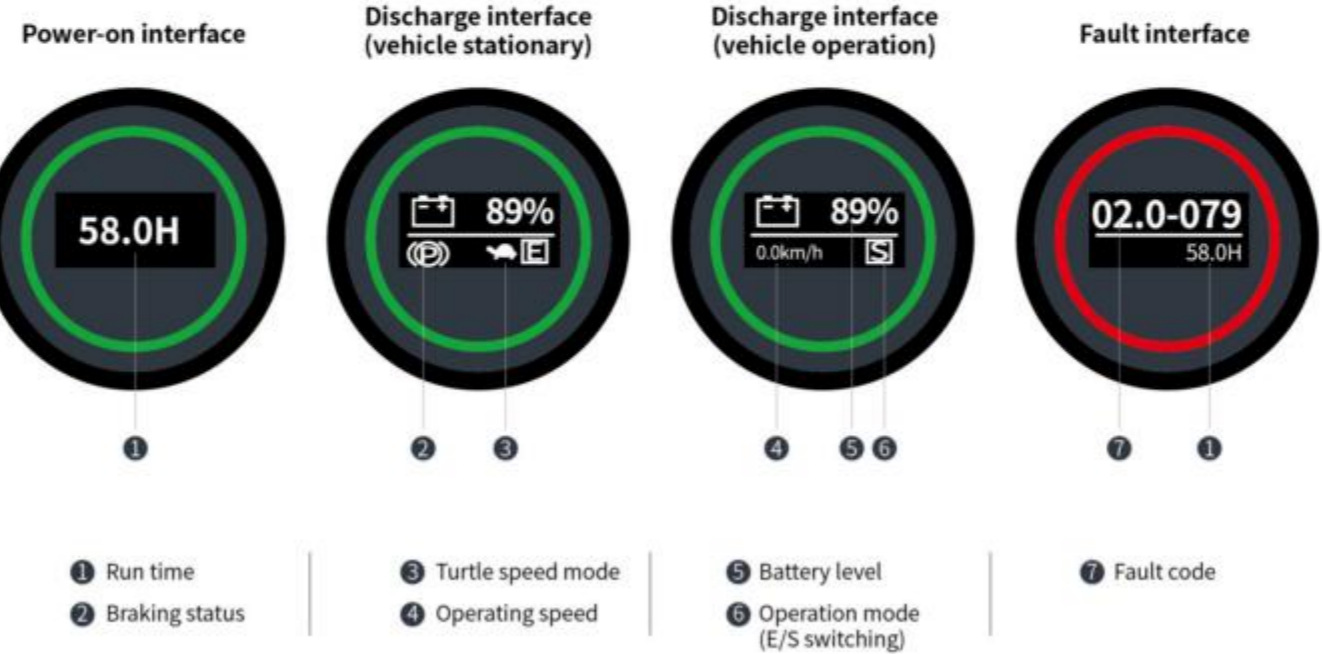
Full-load climbing gradient

2.5t **8%**

Equipped with high-power driving motor, it has strong power, and the whole vehicle has greater climbing gradient and dynamic performance

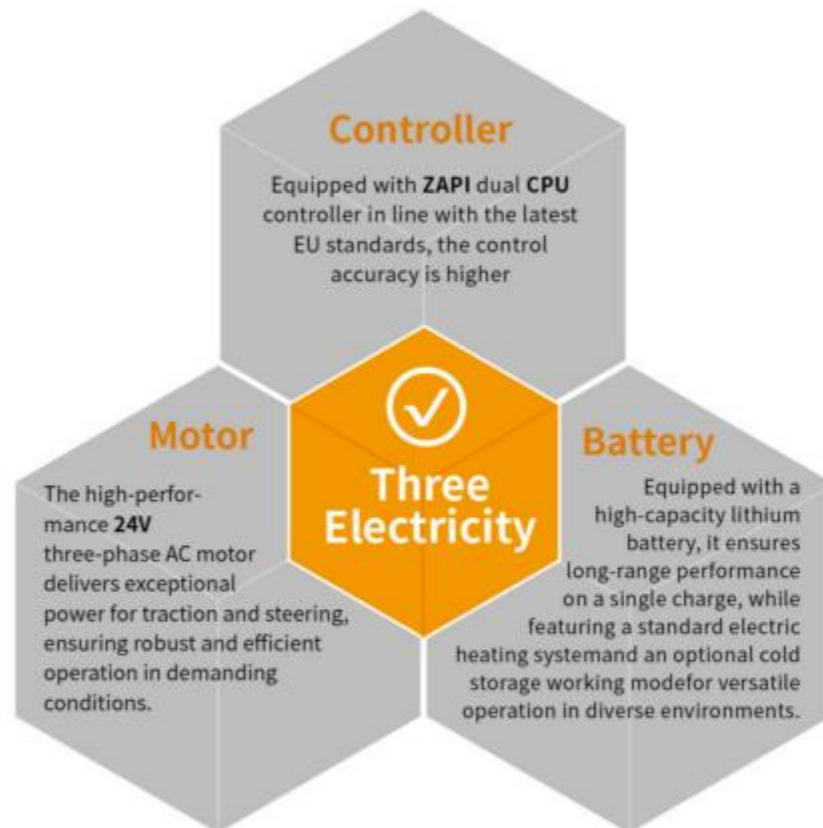
✓ Instrument

The instrument completely displays the working time, driving data, electric quantity, fault and other information.



✓ Controller assembly

ZAPI drive + EPS AC steering + lifting three-in-one controller, maximum drive current 320A, super power; dual-core controller, in line with the latest EU safety requirements;



✓ Battery

Long single workshift **≥8h**

Standard charger Fast charging **24V 100A**

The charging port is placed on the side for convenient charging

The battery box has the same size and can be interchanged at will



Battery configuration table
24V/205Ah, 24V/230Ah, 24V/280Ah

SECURITY UPGRADE INTELLIGENT AND WORRY-FREE

Various measures in parallel to improve vehicle security performance



✓ **Automatic deceleration in cornering (handle steering over 3°)**

Reduce the risk of rollover in bends

✓ **High performance hydraulic unit**

Low noise, stable lifting and descending

✓ **Automatic parking (release the joystick)**

Adapt to the working scene of ramp and flat ground, and realize automatic parking of ramp and flat ground (empty/full load).



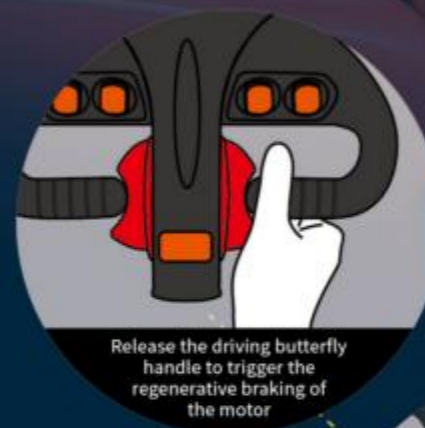
✓ **Joystick**

Standard smart handle for comfortable operation

Side arrangement of lifting switch: convenient for separate operation of left and right hands

Mid-mounted loudspeaker switch: convenient for whistling

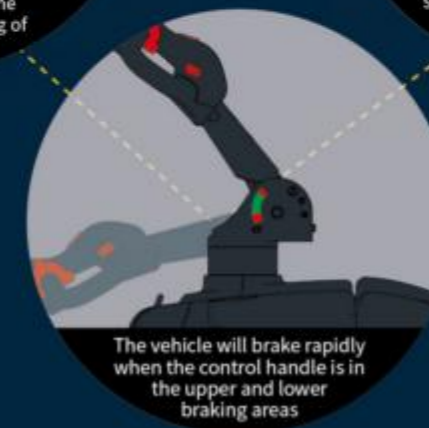
✓ **Multiple braking functions**



Release the driving butterfly handle to trigger the regenerative braking of the motor



Touching the safety reverse anti-collision switch, the vehicle brakes and runs in the reverse direction



The vehicle will brake rapidly when the control handle is in the upper and lower braking areas



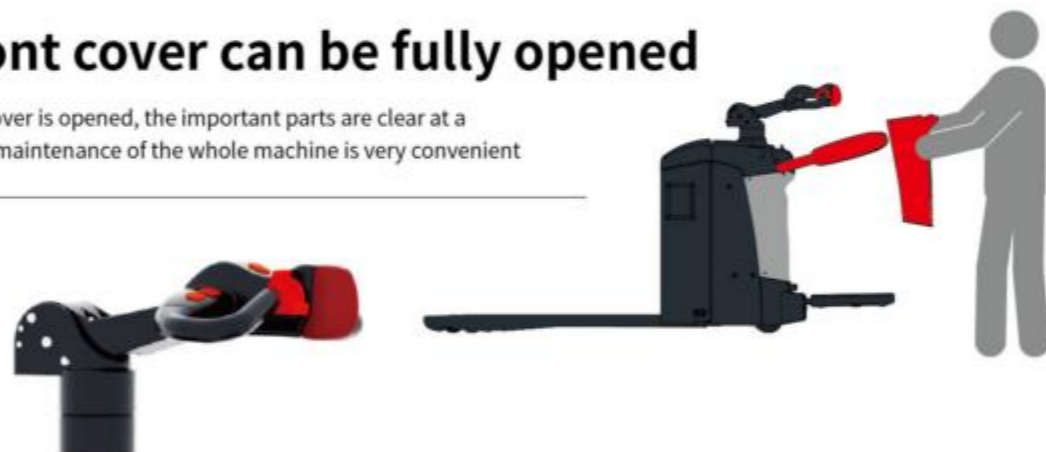
Press the EMERGENCY OFF switch vehicle parking brake

Convenient maintenance Save time and effort

"Meticulous", "Careful", "attentive", Maintenance "Satisfactory"

✓ The front cover can be fully opened

After the front cover is opened, the important parts are clear at a glance, and the maintenance of the whole machine is very convenient



✓ Modular design

The handle control system, electric control assembly, hydraulic pump station, folding protective arm and folding station board are all of modular design, convenient for maintenance and replacement

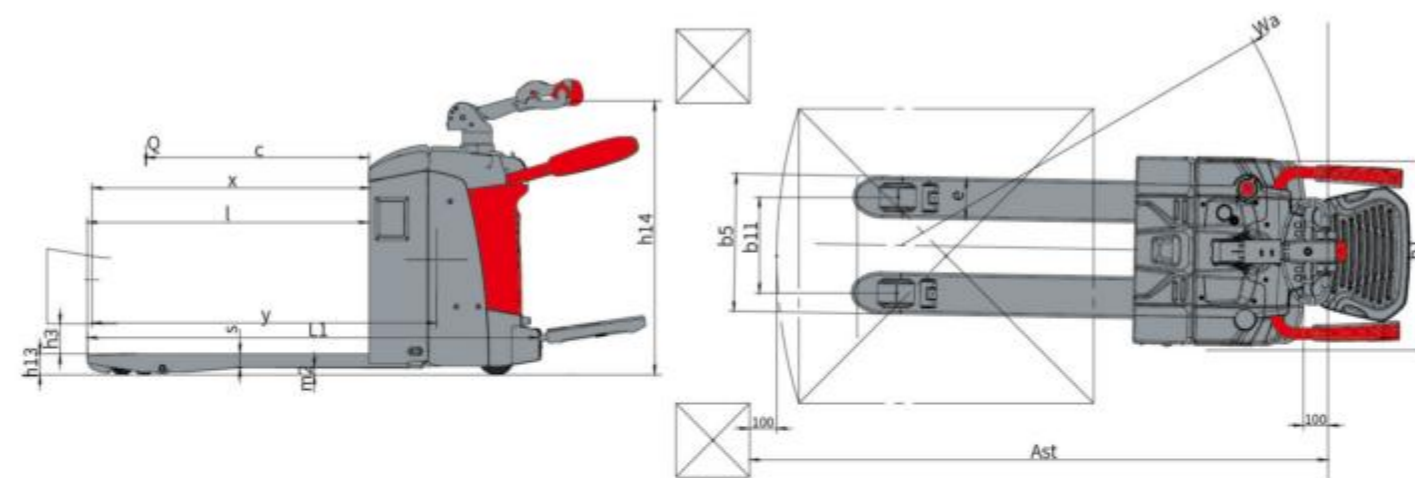


✓ Adjust mechanism of lifting travel switch

The adjustment mechanism of the lifting travel switch facilitates the adjustment of the lifting height, and the side roller adjustment mechanism of the combined roller facilitates the adjustment of the clearance of the side roller

✓ Lubricated bushings and nozzle

All rotating shafts are equipped with lubricated shaft sleeves and grease nipples for easy maintenance and long service life



MANUFACTURER AND TECHNICAL DATA

| Characteristics | | HELI | | |
|-----------------|---|---------------|--------------|-------------------------|
| 1.01 | Manufacturer | | | |
| 1.02 | Model | CBD20-A2FLIH | CBD25-A2FLIH | CBD30-A2FLIH |
| 1.03 | Operating mode | Stand-on/Walk | | |
| 1.04 | Rated load carrying capacity | Q | kg | 2000 |
| 1.05 | Load centre distance | c | mm | 600 |
| 1.06 | Front overhang | x | mm | 908/964 |
| 1.07 | Wheelbase | y | mm | 1351/1404 |
| Weight | | | | |
| 2.01 | Vehicle weight (including battery) | | kg | 695 |
| 2.02 | Front/rear axle load (full load) | | kg | 98/1697 |
| 2.03 | Front/rear axle load (no load) | | kg | 532/163 |
| Wheels | | | | |
| 3.01 | Tyre type | | | Polyurethane |
| 3.02 | Tyre size, front | | | Φ250x75 |
| 3.03 | Tyre size, rear | | | Φ85x85 |
| 3.04 | Tyre size, assistant | | | Φ125x55 |
| 3.05 | Number of wheels, front/rear (X = driving wheels) | | | 2+1x/4 |
| 3.06 | Tread width, rear | b11 | mm | 390 |
| Dimensions | | | | |
| 4.01 | Lifting height | h3 | mm | 122 |
| 4.02 | Tiller height (min/Max) | | mm | 1404 |
| 4.03 | Minimum fork height | h13 | mm | 87 |
| 4.04 | Overall length | L1 | mm | 1890/2265 |
| 4.05 | Overall width | b1 | mm | 760 |
| 4.06 | Fork dimensions | s/e/L | mm | 55x170x1150 |
| 4.07 | Width across forks | b5 | mm | 560 |
| 4.08 | Ground clearance centre of wheelbase | m2 | mm | 30 |
| 4.09 | Turning radius | Wa | mm | 1590 |
| Performance | | | | |
| 5.01 | Travel speed laden/unladen | | km/h | 9.5/12.5 |
| 5.02 | Lift speed laden/unladen | | mm/s | 45/45 |
| 5.03 | Lowering speed laden/unladen | | mm/s | 50/50 |
| 5.04 | Gradeability | | % | 9.5/25 |
| 5.05 | Braking type | | | Electromagnetic braking |
| Drive | | | | |
| 6.01 | Drive motor power S2-60 min | | kW | 2.8 |
| 6.02 | Lifting motor S3-15% | | kW | 1.2 |
| 6.03 | Battery capacity | | V/Ah | 24/205 |
| 6.04 | Battery weight ±5% | | kg | 105 |
| Others | | | | |
| 7.01 | Drive control type | | | AC |



Configuration parameter

| NO. | Eigenvalues of the configuration | Configuration options | Standard | Optional |
|-----|----------------------------------|------------------------------------|-----------|---------------|
| 1 | Tyres type | Front and rear polyurethane tires | ✓ | |
| 2 | Battery replacement method | Hoisting | ✓ | |
| | | Side pulling | | ✓ |
| 3 | Fork outer width | 560 | ✓ | |
| | | 685 | | ✓ |
| 4 | Fork length (mm) | 1150 | ✓ | |
| | | 850 | | ✓ |
| | | 1200 | | ✓ |
| | | 1450 | | ✓ |
| | | 1600 | | ✓ |
| | | 1800 | | ✓ |
| | | 2000 | | ✓ |
| | | 2200 | | ✓ |
| 5 | Minimum fork height | 85 | ✓ | |
| | | | | |
| 6 | Battery | CBD20-A2FLIH | 24V/205Ah | 24V/230/280Ah |
| | | CBD25-A2FLIH | 24V/230Ah | 24V/205/280Ah |
| | | CBD30-A2FLIH | 24V/280Ah | 24V/205/230Ah |
| 7 | Startup mode | Key switch | ✓ | |
| | | Swiping card | | ✓ |
| 8 | Reverse buzzer | Uninstalled reversing buzzer | ✓ | |
| | | Equipped with reversing buzzer | | ✓ |
| | | Equipped with reversing voice horn | | ✓ |
| 9 | Packaging method | HeLi packaging | ✓ | |
| | | Neutral packaging | | ✓ |
| 10 | Plates | Plates in Chinese | ✓ | |
| | | Plates in English (EN) | | ✓ |
| | | Plates in English (US) | | ✓ |