

Terex Finlay TF-75H Tracked Feeder Features and Benefits

Rev-00

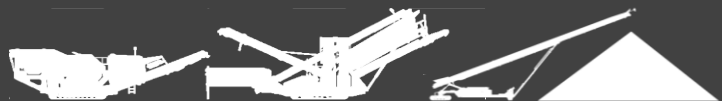
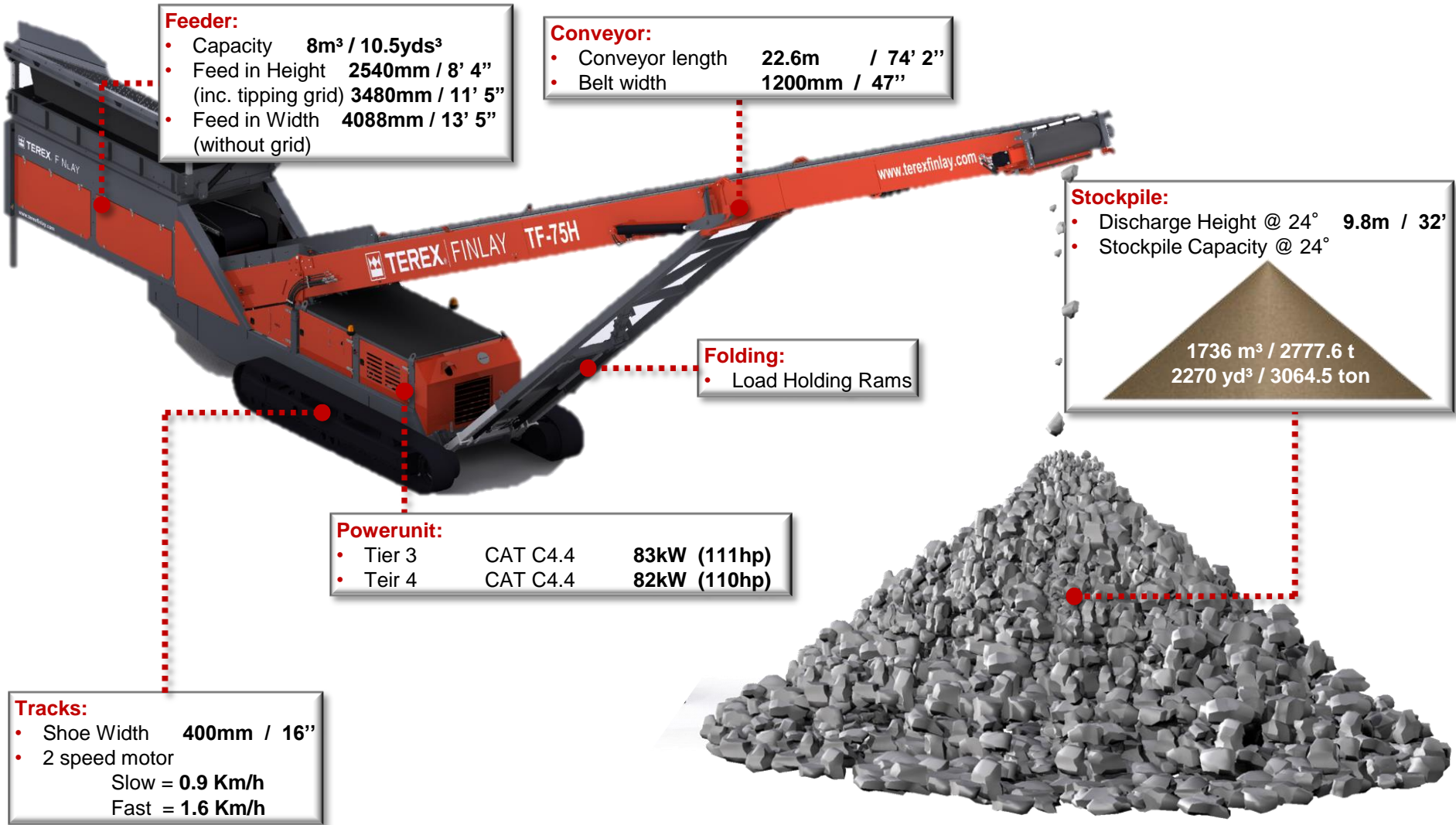
Date: Apr-19

Subject to change without notice



WORKS FOR YOU.

Machine Layout



WORKS FOR YOU.

Feed Conveyor

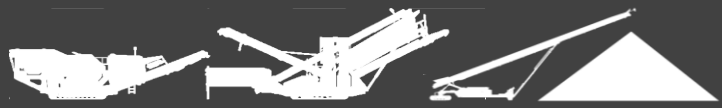
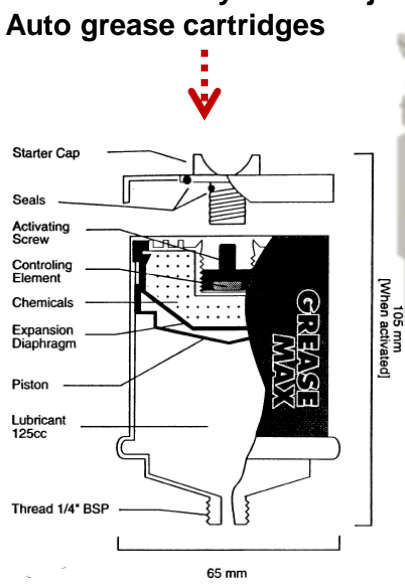
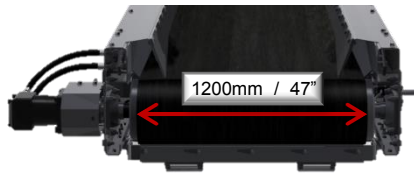
- Capacity: **8m³ / 10.5yds³**
- Feed in Height: **2540mm / 8' 4"**
(inc. tipping grid): **3480mm / 11' 5"**
- Feed in Width: **4088mm / 13' 5"**
(without grid)
- Belt Width: **1200mm / 3' 11"**
- Variable Belt Speed: **0 – 25 MPM (83 ft / min)**
- **Single drive standard 160cc motor and high torque gearbox**
- **Rosta scrapper belt cleaner**
- **External Conveyor belt adjustment**



WORKS FOR YOU.

Main Conveyor

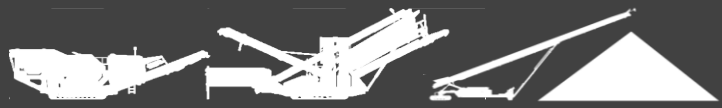
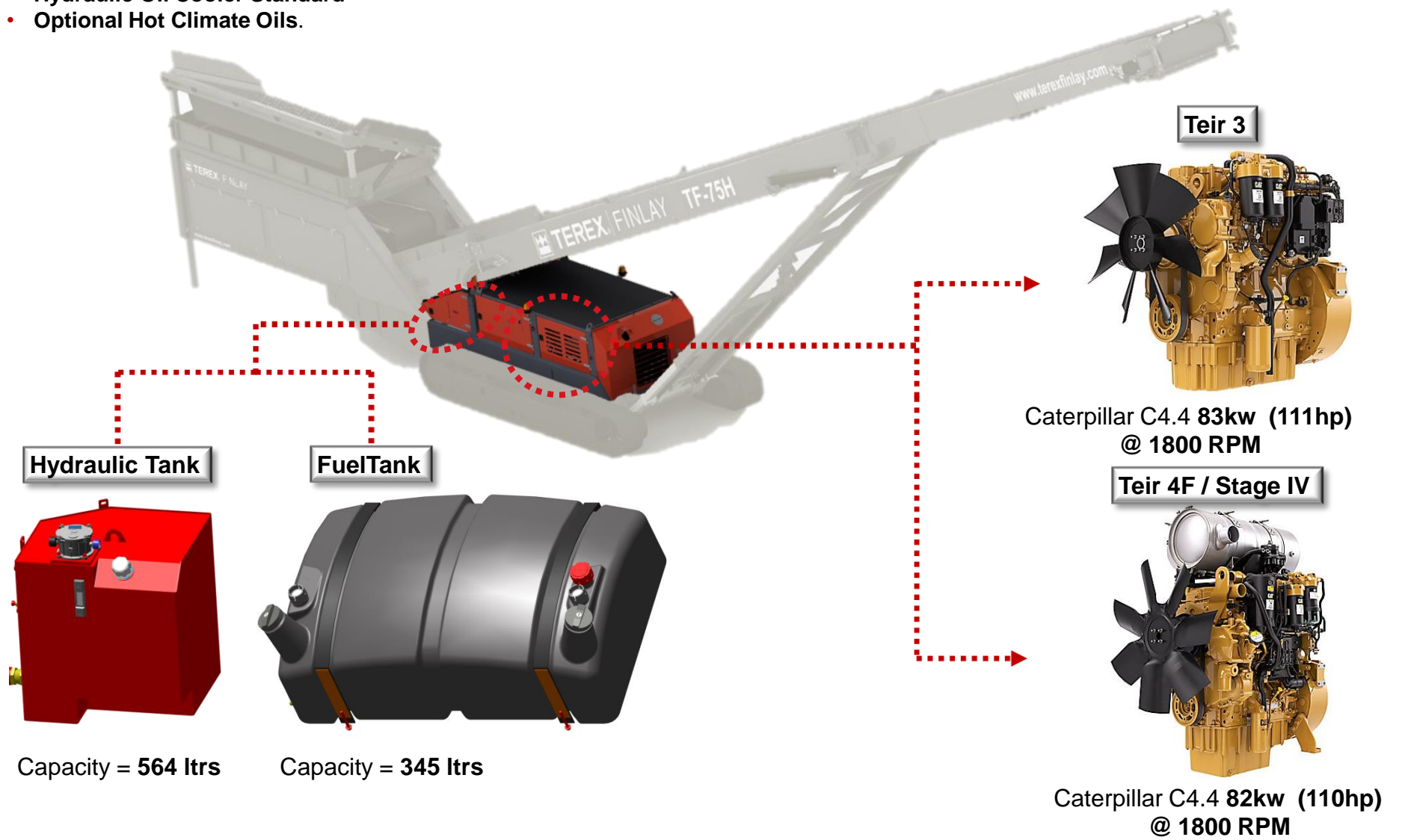
- Conveyor Length: 22.6m (74'2")
 - Belt Width: 1200mm (47")
 - Hydraulic drive: 680cc Motor
 - Discharge height @ 18° 8.0m (26'3")
 - Stockpile capacity @ 18° 944m³
 - Max Working angle: 24°
 - Discharge height @ 24° 9.8m (32')
 - Stockpile capacity @ 24° 1736m³
 - Capacity up to 600+TPH @ 18°
-
- Polyurethane tensioned belt cleaner.
 - Hydraulic discharge height adjustment
 - Hydraulic fold over for transport
 - External Conveyor belt adjustment
 - Auto grease cartridges



WORKS FOR YOU.

Powerunit

- Hydraulic Oil Cooler Standard
- Optional Hot Climate Oils.



WORKS FOR YOU.

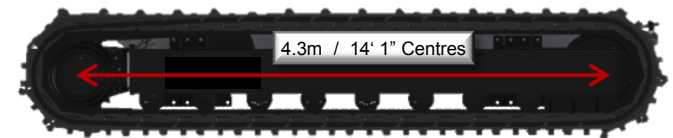
Folding:

- Hydraulic conveyor Angle adjustment
 - From 0° to 24°
 - Load holding rams (No pins required to hold angle.)
- Hydraulic fold over for transport
- Hydraulically Adjustable support legs for hopper.
(Load holding valve to hold rams in position)



Tracks

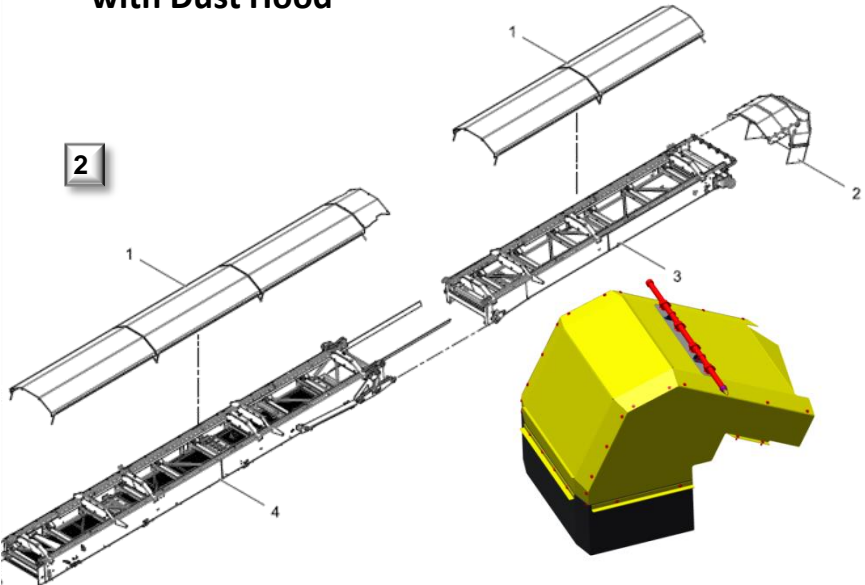
- 2 Speed Track Motor
 - Low Speed **0.9 Km/h**
(High torque, General tracking)
 - High Speed **1.6 Km/h**
(Low torque, Level Ground / Straight Line tracking)



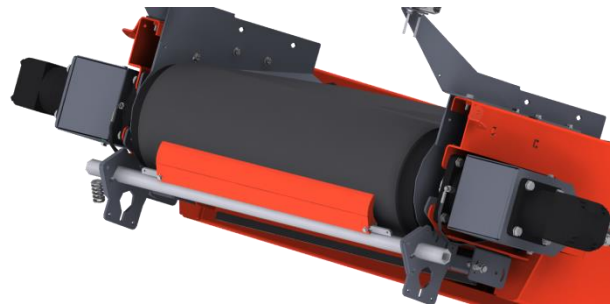
WORKS FOR YOU.

Machine Options

- 1 Canvas Dust Covers Discharge Conveyor
- 2 Canvas Dust Covers Discharge Conveyor comes with Dust Hood

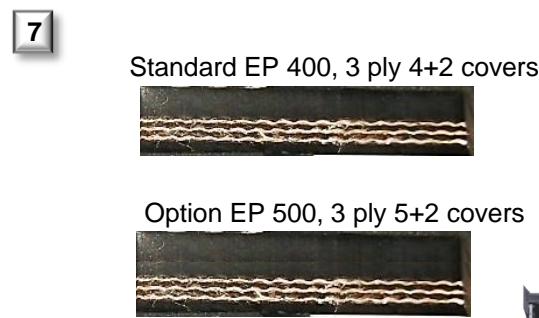
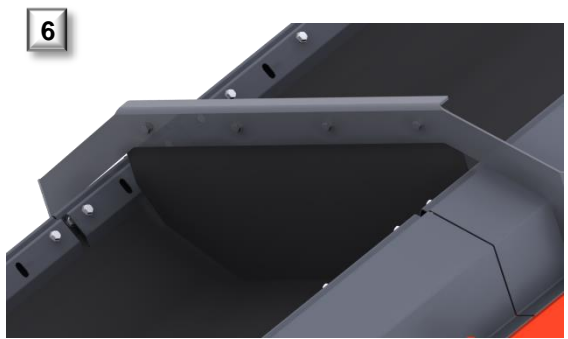


- 3 Twin Drive Discharge Conveyor (Increased Capacity)
- 4 Full Length Skirting Rubber
- 5 Blade type scrapper (Improved belt cleaning with wet/sticky material)

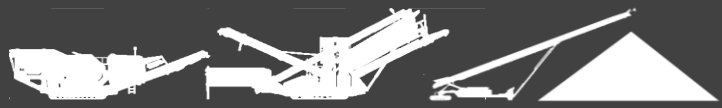
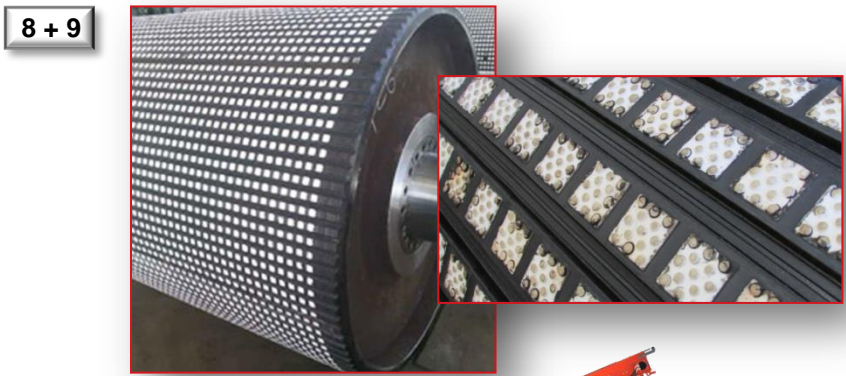


WORKS FOR YOU.

- 6 **Anti-roll back flaps**
(helps prevent roll back of material)
- 7 **Heavy duty plain belt (500EP, 3 ply, 5+2 covers)**
(Belt strength is higher, larger depth of rubber on top cover)



- 8 **Discharge conveyor drive drum with Ceramic Lagging**
(Has more friction with the belt for larger capacities)
- 9 **Feed conveyor drive drum with ceramic lagging**
- 10 **Discharge conveyor under guard Option**
(up to end of mid section)



- 11 Dust suppression at discharge conveyor head drum.
- 12 Belt Weigher option
- 13 Overband magnet at feedboot of discharge conveyor.
- 14 Radio remote to
Start / Stop feeder
Raise / Lower discharge conveyor

11



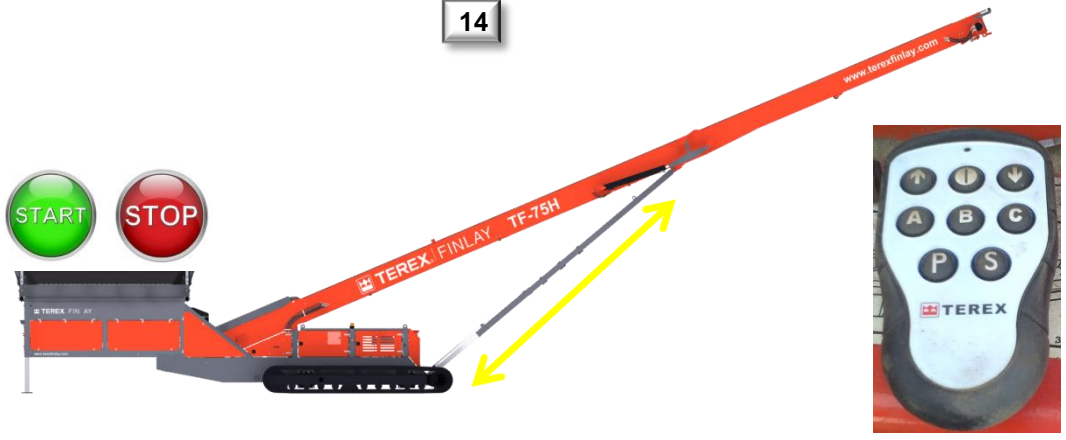
12



13



14



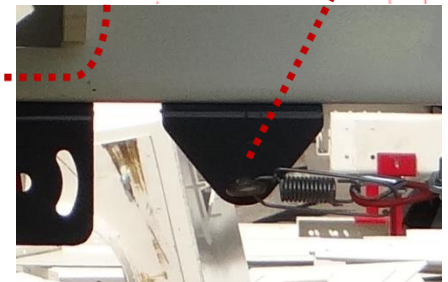
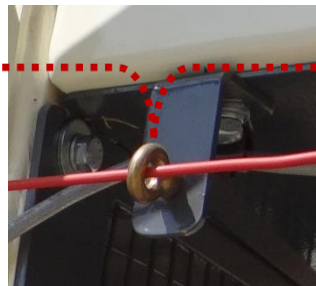
- 15 Radio remote system for tracks
- 16 Pull cord emergency stop on control panel side
- 17 Pull cord emergency stop on control panel side

15



16

17

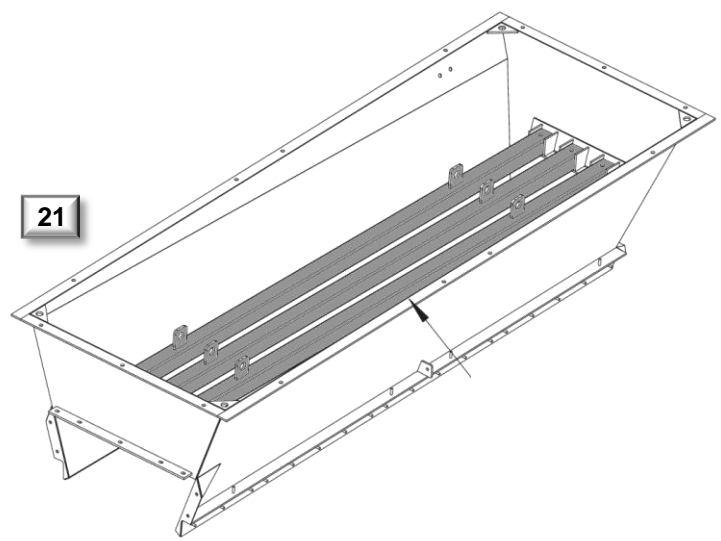
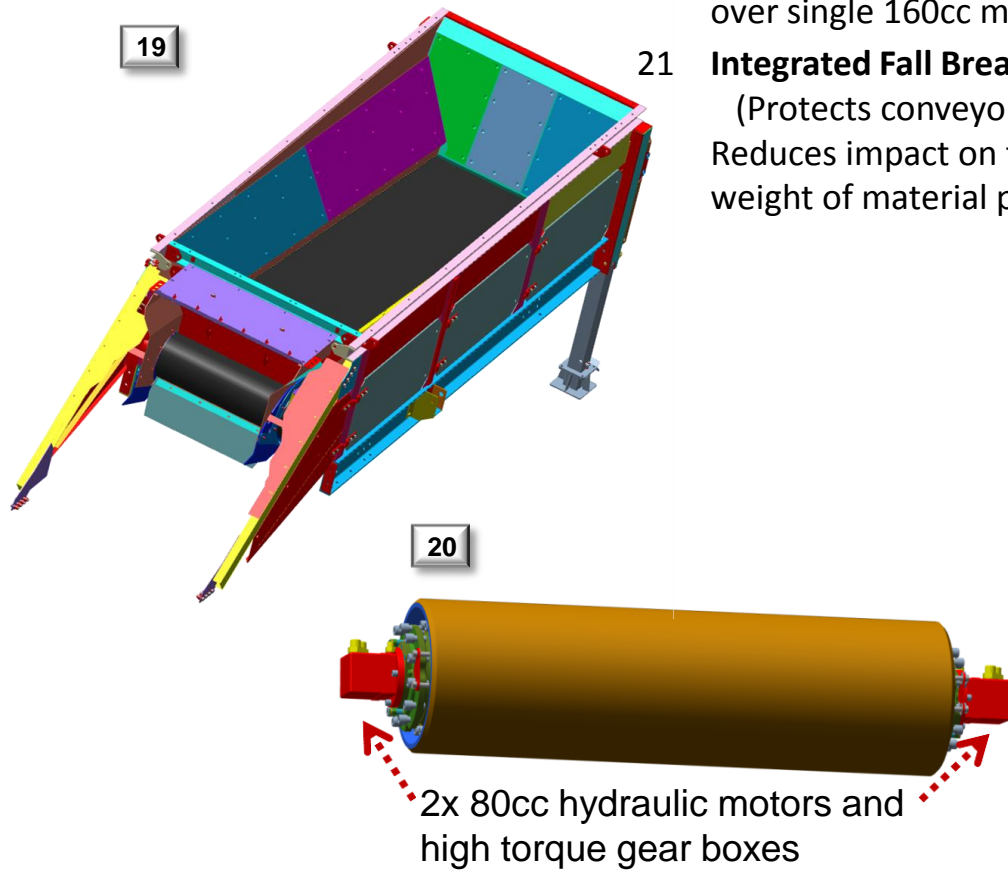


WORKS FOR YOU.

- 19
- Hopper lined with**
 - Mild steel liners
 - 6mm wearplate
- 20
- Twin drive Feeder**

(2x 80cc motors giving 27% increase in torque over single 160cc motor.)
- 21
- Integrated Fall Break System bolted into hopper**

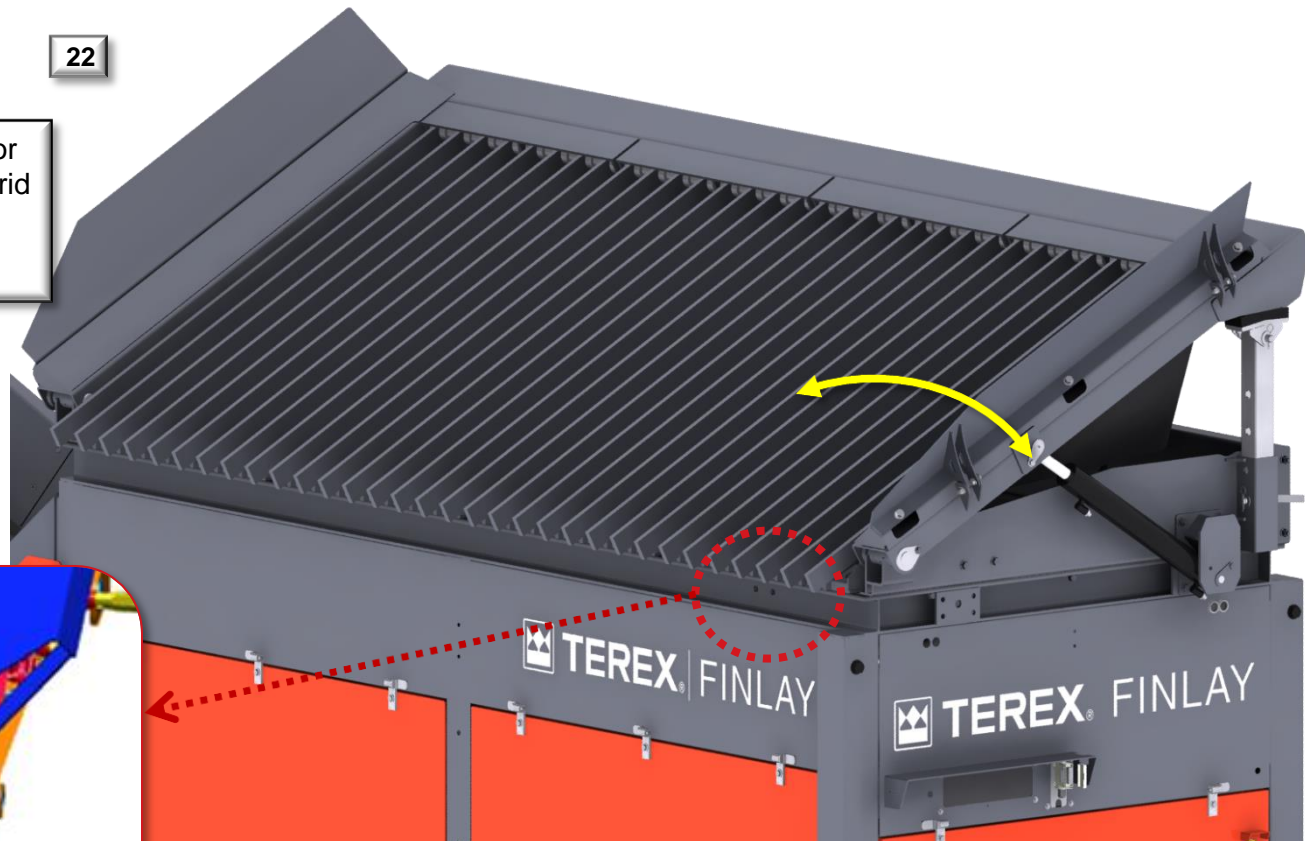
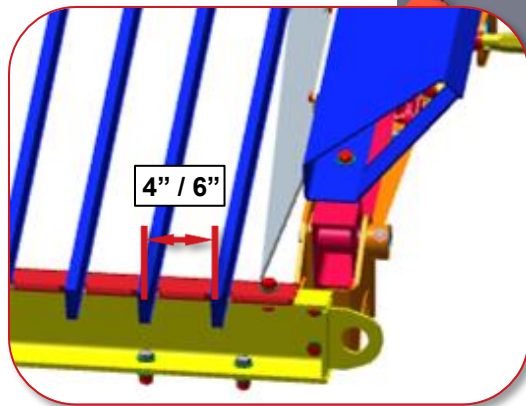
(Protects conveyor belt form damage and wear. Reduces impact on the belts and reduces the weight of material pushing down on the belt.)



22 Tipping Grid option (100mm / 4" grid spacing) (150mm / 6" grid spacing)

Automated tipping of grid removes large or wedged material periodically so hopper grid remains open and efficient.

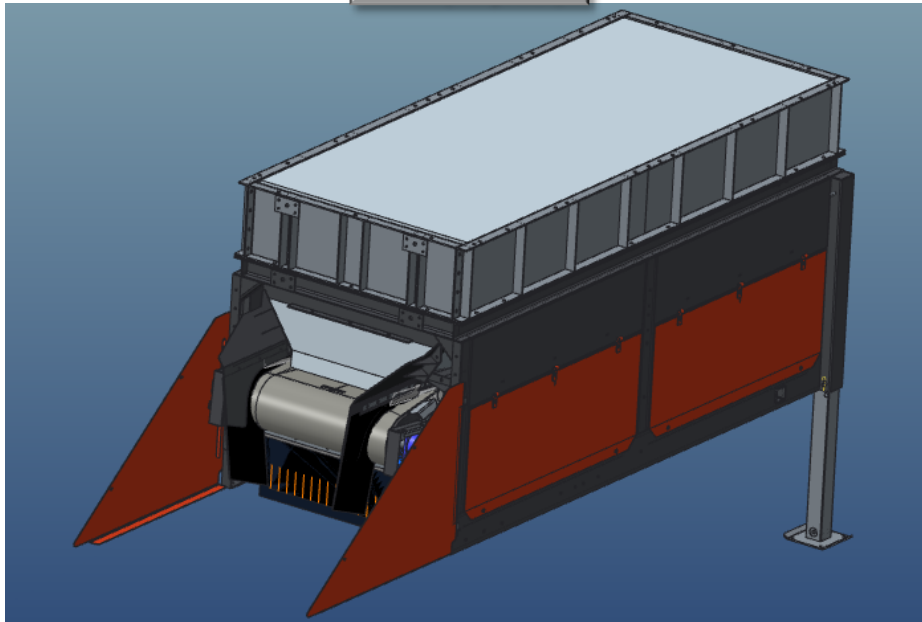
Controlled via radio remote.



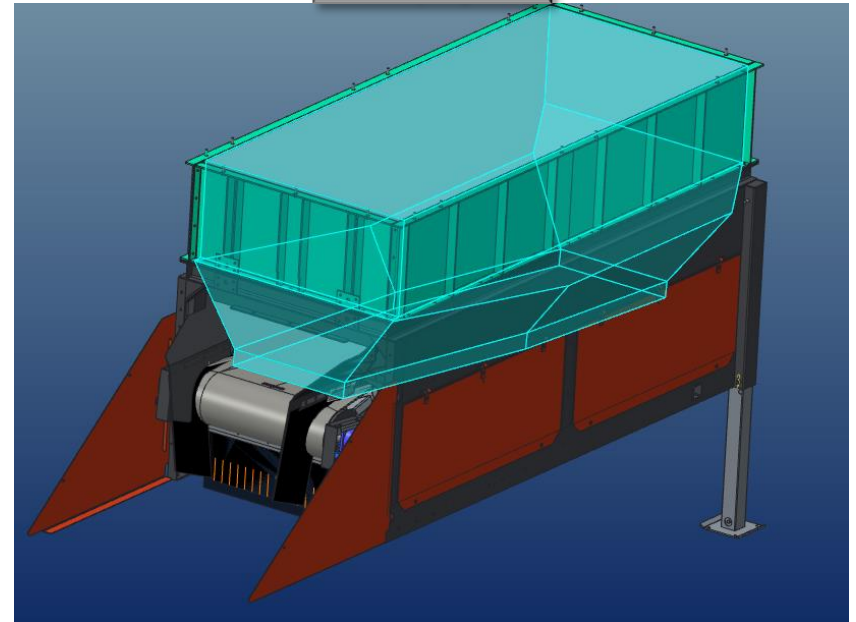
WORKS FOR YOU.

23 Hopper Extension (500mm / 20") (700mm / 28")

500mm extension
9m³ (12 yds³)



700mm extension
12m³ (15 yds³)



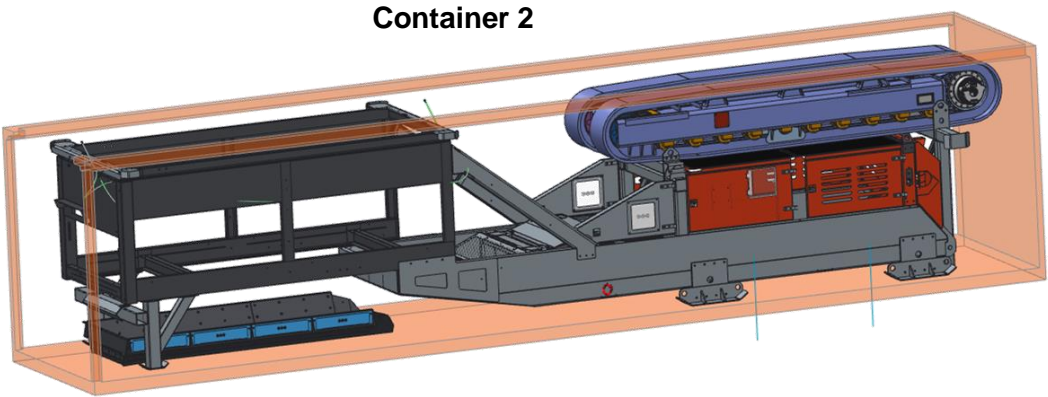
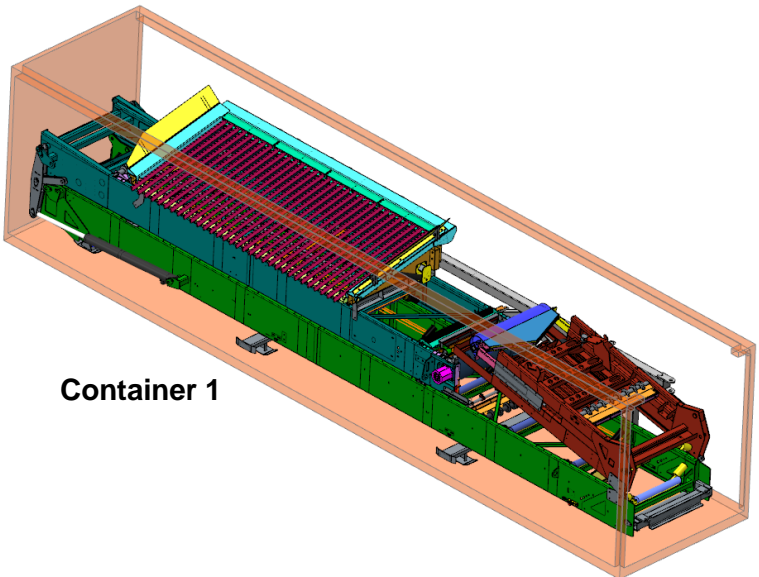
WORKS FOR YOU.

Transport Dimensions

Transport



Containerised Shipping (Requires complete disassembly and rebuild of machine)



WORKS FOR YOU.

	@ 24°
A	Standard Machine (2540mm – 8' 4") Including Tipping Grid (3480mm – 11' 5")
B	25610mm – 84'
C	14210mm – 46' 7"
D	10095mm – 33' 1"

